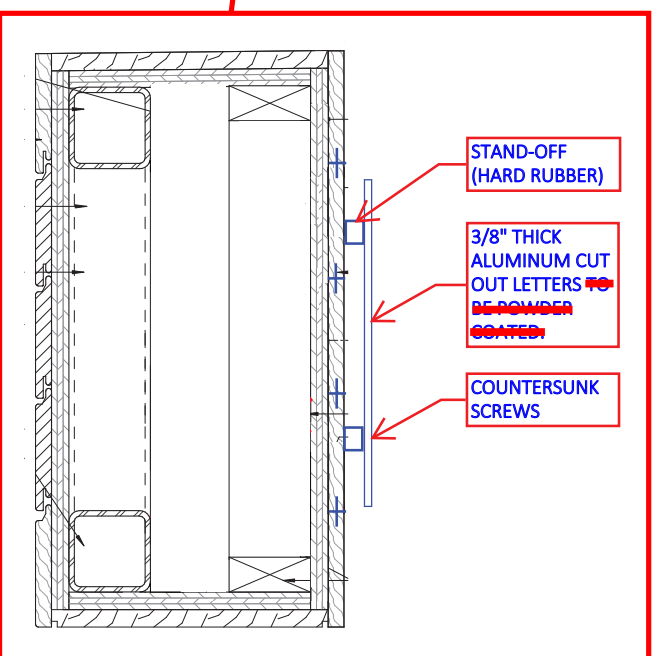


38'-4"

11 1/2"
EQ

FLORIDA RUFFIN RIDLEY SCHOOL

10'-0"



STAND-OFF
(HARD RUBBER)

3/8" THICK
ALUMINUM CUT
OUT LETTERS
~~TO~~
~~BE POWDER~~
~~COATED~~

COUNTERSUNK
SCREWS

11 1/2" HIGH ALUMINUM LETTERS
ON STANDOFFS

FONT: GOTHAM MEDIUM

COLOR: ANODIZED ALUMINUM

FLORIDA RUFFIN RIDLEY SCHOOL
Brookline, MA

NEW SCHOOL NAME SIGNAGE FOR STEDMAN STREET

HMFH ARCHITECTS

130 Bishop Allen Drive
Cambridge, MA 02139
617 492 2200
@HMFHarch hmfh.com

H M
H F

DRAWING NUMBER

SKA
001

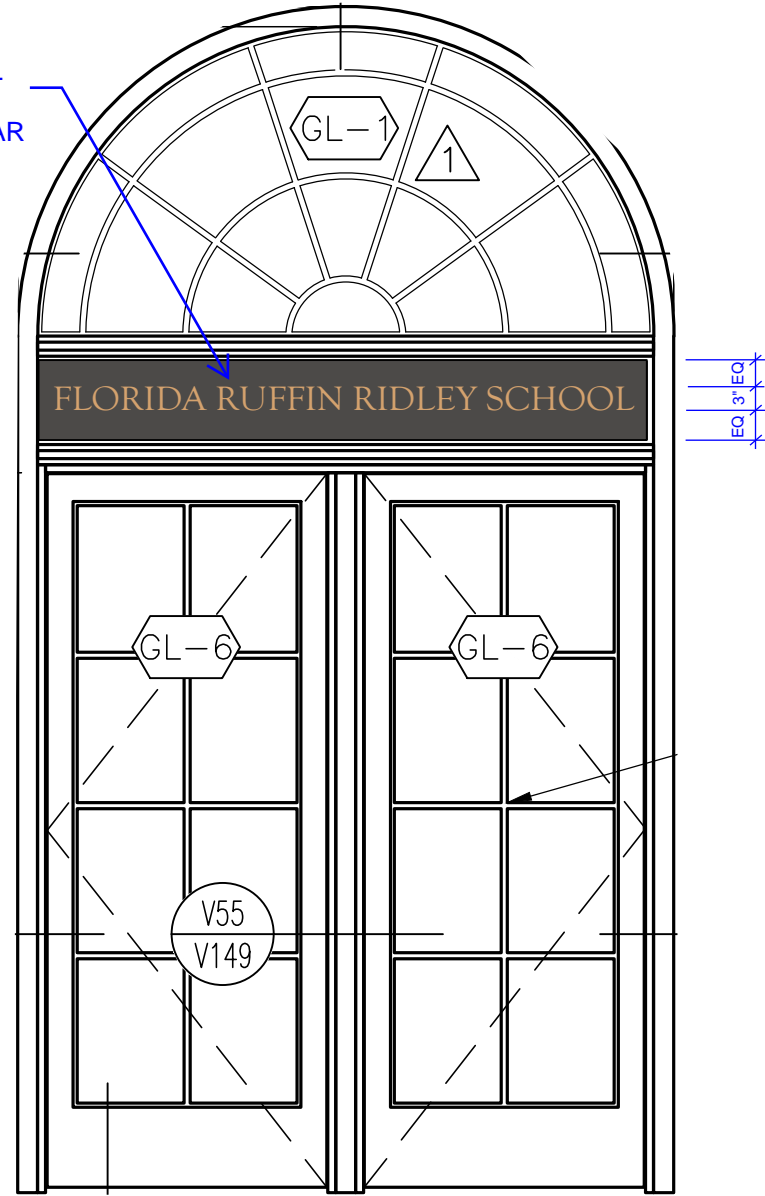
JOB NUMBER

401213

SCALE:

DATE: 02/11/2020 DRAWN: CD CHECKED: VV

3" HIGH BRASS LETTERS
ADHERED TO METAL PANEL
FONT:
GOUDY OLD STYLE REGULAR

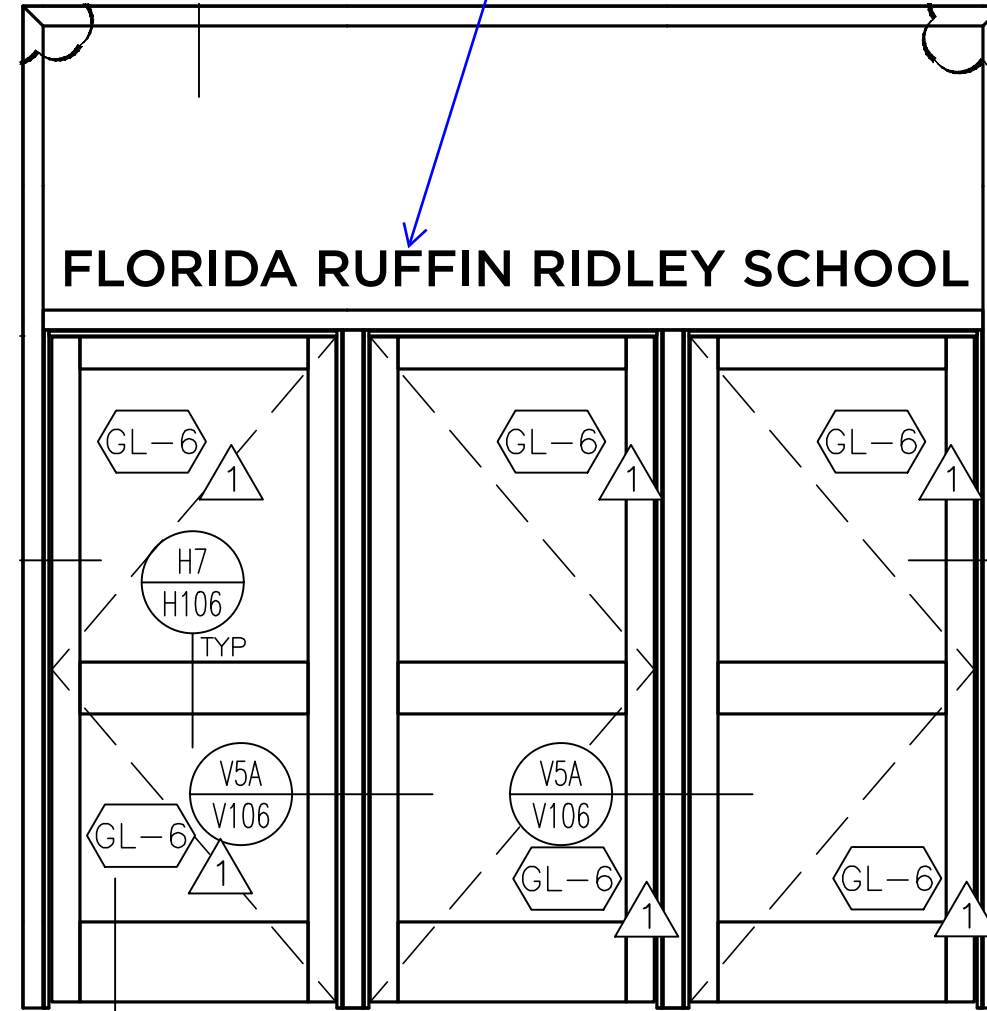


HARVARD STREET ENTRY

4 1/2" HIGH VINYL LETTERS
ADHERED TO GLASS
FONT:
GOTHAM MEDIUM
COLOR: TO MATCH PANTONE 345



3" 4 1/2"



FIELD ENTRANCE

FLORIDA RUFFIN RIDLEY SCHOOL

Brookline, MA

NEW SCHOOL NAME SIGNAGE FOR HARVARD STREET
AND FIELD ENTRANCES

HMFH ARCHITECTS

HMFH

130 Bishop Allen Drive
Cambridge, MA 02139
617 492 2200
@HMFHarch hmfh.com

DRAWING NUMBER

**SKA
002**

JOB NUMBER

401213

SCALE:

DATE: 02/11/2020 DRAWN: CD CHECKED: VV